

Count in **100s**.

Which number comes next in each sequence? Join the boxes.

500, 600, 700, ? ●

● 300

300, 400, 500, ? ●

● 900

0, 100, 200, ? ●

● 800

600, 700, 800, ? ●

● 600

Count in **8s**.

Which number comes next in each sequence? Join the boxes.

0, 8, 16, ? ●

● 48

24, 32, 40, ? ●

● 40

48, 56, 64, ? ●

● 24

16, 24, 32, ? ●

● 72

Join the boxes to the correct answers.

100 less than 694 ●

● 794

100 less than 794 ●

● 894

100 less than 994 ●

● 694

100 less than 894 ●

● 594

Drag the correct numbers into the boxes to complete the table.

602

682

692

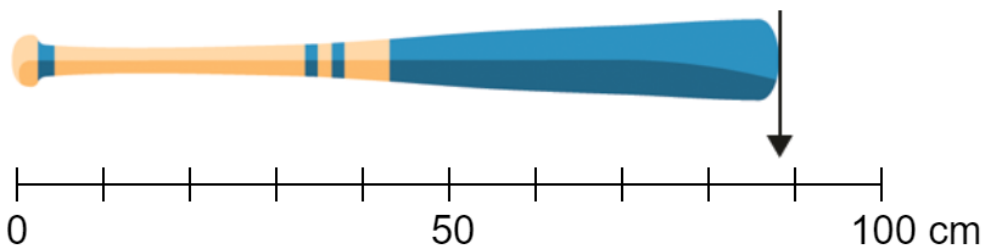
702

712

722

Number	10 more
672	<input type="text"/>
692	<input type="text"/>
702	<input type="text"/>

The arrow points to the end of the bat.



Click the number that you **estimate** the arrow points to.

54 cm

80 cm

82 cm

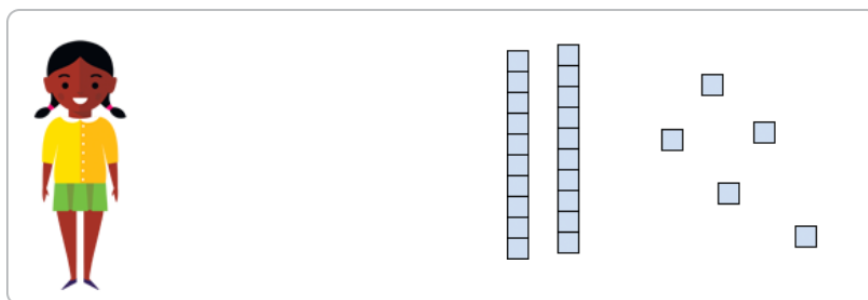
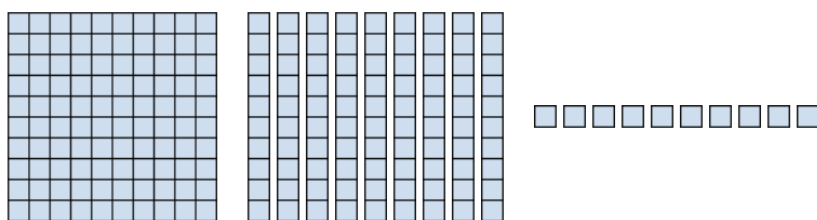
88 cm

90 cm

1 mark

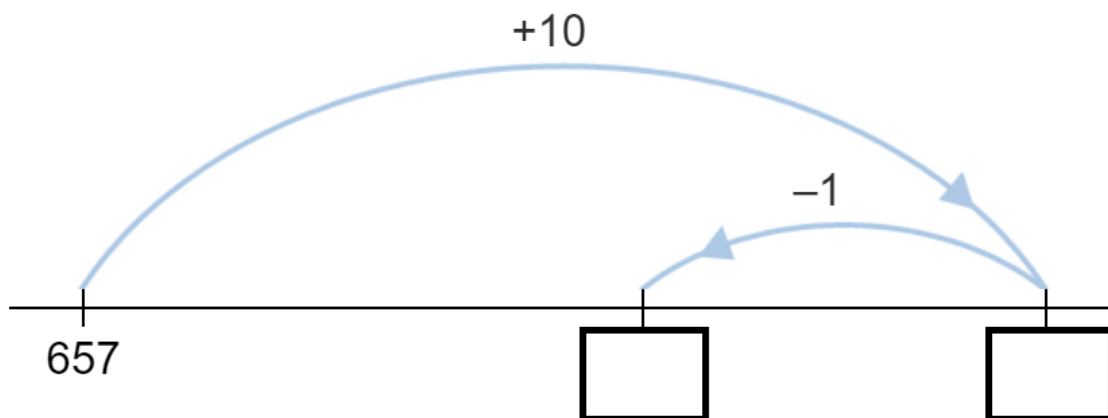
Abigail is making the number **156** using the blocks.

Give Abigail the rest of the blocks she needs.



1 mark

Noah uses an empty number line to help him add **657** and **9**



Complete the number line and write the answer in the box below.

$$657 + 9 = \boxed{}$$

1 mark

110

120

130

140

150

160

170

$60 + 70 = \square$

$80 + 90 = \square$

$70 + 80 = \square$

$50 + 60 = \square$

1 mark

Billy

I have **260** football cards.

I have **90 less** cards than Billy.



Jayan

How many football cards has Jayan got? Tick **one**.

50

☐

210

☐

70

☐

170

☐

350

☐

1 mark

13

Complete the calculation using the number cards.



$$\begin{array}{r}
 \boxed{} \boxed{7} \boxed{7} \\
 - \boxed{3} \boxed{1} \boxed{} \\
 \hline
 \boxed{5} \boxed{} \boxed{2}
 \end{array}$$

4 5 6 7 8

1 mark

Write a digit in each box to make the number sentence correct.

$$\boxed{7} \boxed{} - \boxed{} \boxed{4} = \boxed{6} \boxed{3}$$

Click and select the numbers in the $3 \times$ multiplication table.

5	6	8	9	12	13
15	16	18	19	20	24

Write the answers in the boxes.

$40 \div 4 = \square$

$16 \div 4 = \boxed{}$

$8 \div 4 = \square$

$24 \div 4 = \boxed{}$

What is the missing number in the calculation below?

$12 \times 8 = \boxed{}$

Click and select the missing number.

82

84

86

92

94

96

98

1 mark

18

Find the answer to $5 \times 9 \times 2$



It will help you if you multiply the numbers in a different order.

Space
for your
working
out

A blank grid with a black rectangle in the bottom right corner. The grid is composed of 10 columns and 6 rows of squares. A black rectangle is drawn in the bottom right corner, spanning 2 columns and 2 rows. The rectangle is located in the bottom right corner of the grid, specifically in the bottom right corner of the grid.

1 mark

Liz is using a mental strategy to find the answer to 17×2

Write the numbers in the boxes to complete her jottings.

$$17 \times 2 = \begin{array}{|c|} \hline \square \\ \hline 10 \times 2 \\ \hline \end{array} + \begin{array}{|c|} \hline \square \\ \hline 7 \times 2 \\ \hline \end{array}$$

Now write the answer in the box below

$$17 \times 2 = \begin{array}{|c|} \hline \square \\ \hline \end{array}$$

Noah is finding the answer to 23×3

Can you solve Noah's sum below. Show your workings.

Look at this array of counters.

Complete the number sentence to show how many counters there are **altogether**.

2

3

4

8

16

$$\square \times \square = \square$$

Luke has **27** balloons to give out to his friends.

Each friend gets **3** balloons.



How many friends did Luke give balloons to?

A 10x10 grid with a label 'friends' in the bottom right corner. The label is enclosed in a black rectangular box. The grid is composed of light gray lines on a white background. The label 'friends' is positioned in the bottom right corner of the grid, specifically in the 9th column and 1st row from the bottom.

Here are five number cards.



Drag and use **two** of the cards to make this calculation correct.

$$\square \times 3 = \square \square$$



The football is **10 times** heavier than the potato.

Click and select the mass of the football.

0.52 g

52 g

520 g

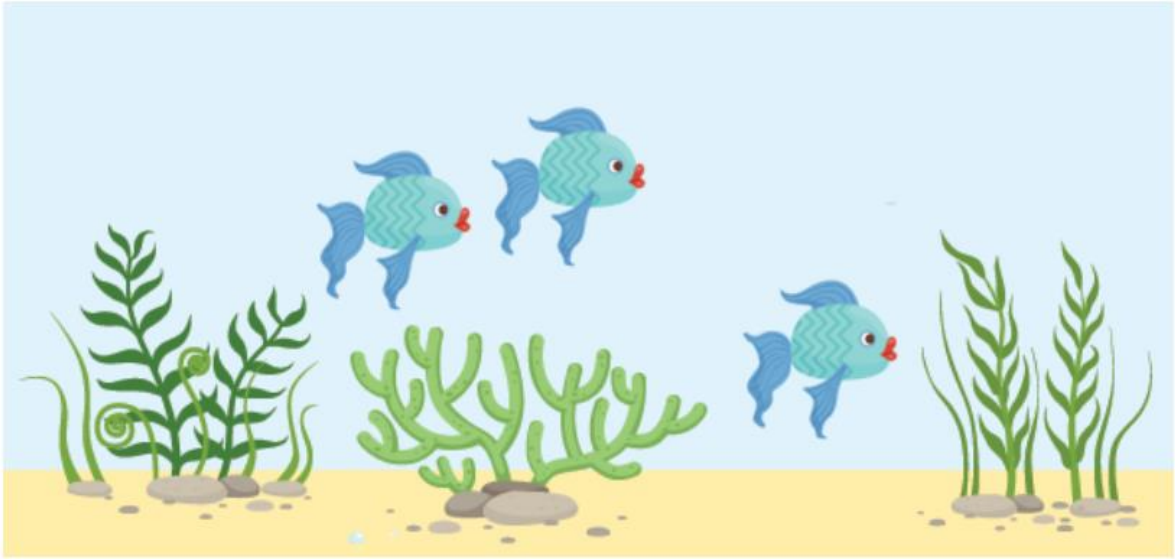
5200 g

5210 g

1 mark

For every 1 blue fish in the tank, there should be 2 yellow fish in the tank.

Add the correct number of yellow fish to the tank.



1 mark



Amara

I have **348** points.

I have **10 more** points than Amara.



James

How many points has James got?

1 mark