



Continent of South America



What Is a Continent?

There are seven continents on Planet Earth. A continent is a large area of land that is often separated from other areas of land by water or another feature such as mountains.

Which continent do you live in?



South America



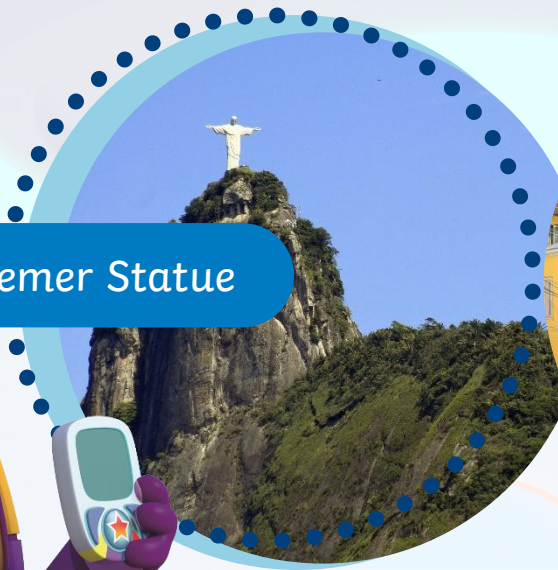
Here is a map which shows the countries that are in the continent of **South America**.

South America is made up of twelve countries.



What Is South America?

Christ the Redeemer Statue



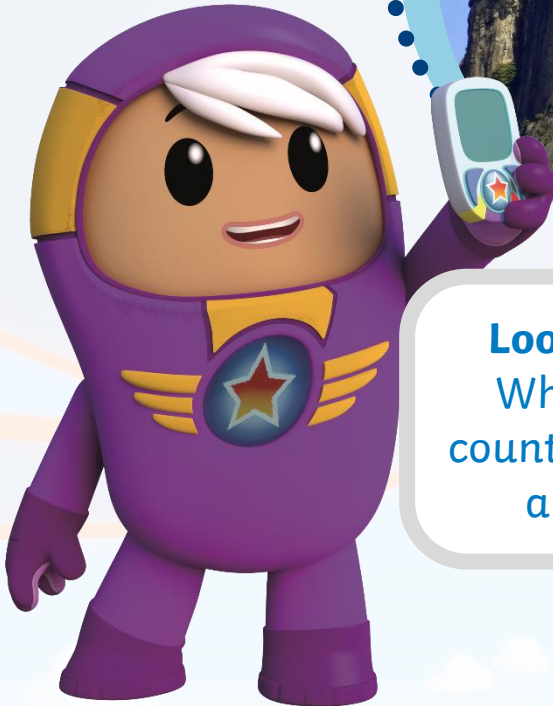
Valparaíso



Look at these pictures.
Which are places from
countries in South America
and which are not?



Torres del Paine



What Is South America?

Christ the Redeemer Statue

in Brazil

Valparaíso

is a city in Chile

Did you work it out?
They are all pictures
of places in South
America.

Torres del Paine

in Patagonia



What Is a Landmark?

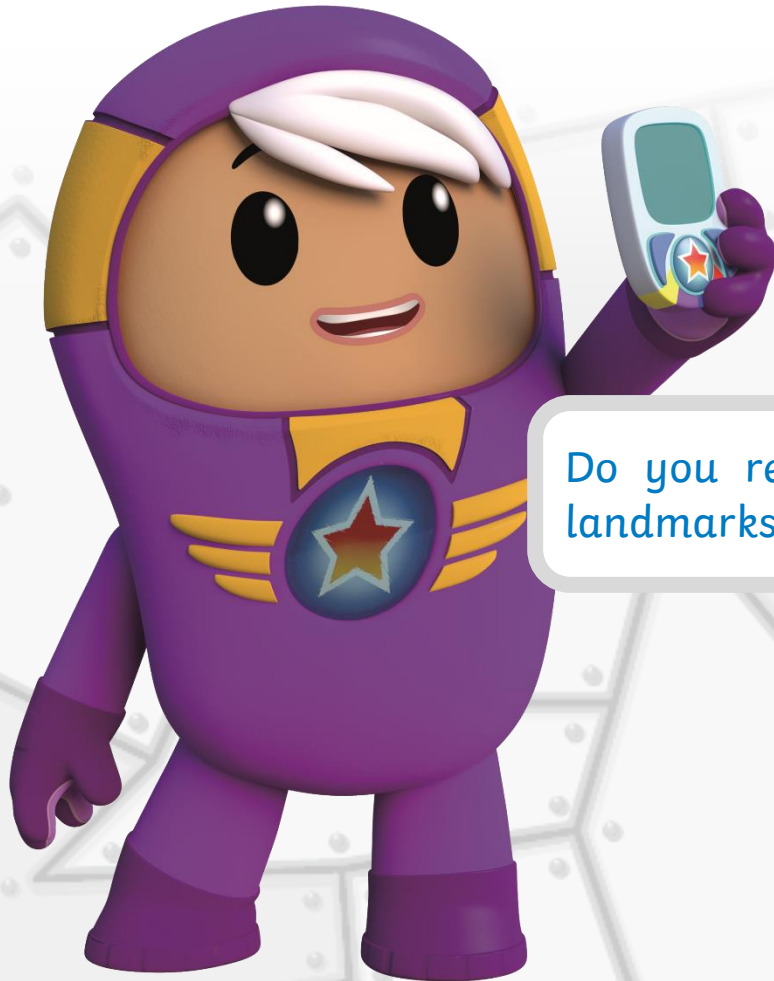


Can you remember what a landmark is?

A landmark is something that stands out in an area. It could be a building, a bridge, a lake or river, a sculpture or something else. These places might be special because of their age or their size.

A landmark makes a place recognisable. This means you could look at a picture of a landmark and know straight away where it is.

What Is a Landmark?



Do you recognise any of these famous landmarks from around the world?

What Is a Landmark?

Great Wall of China, China



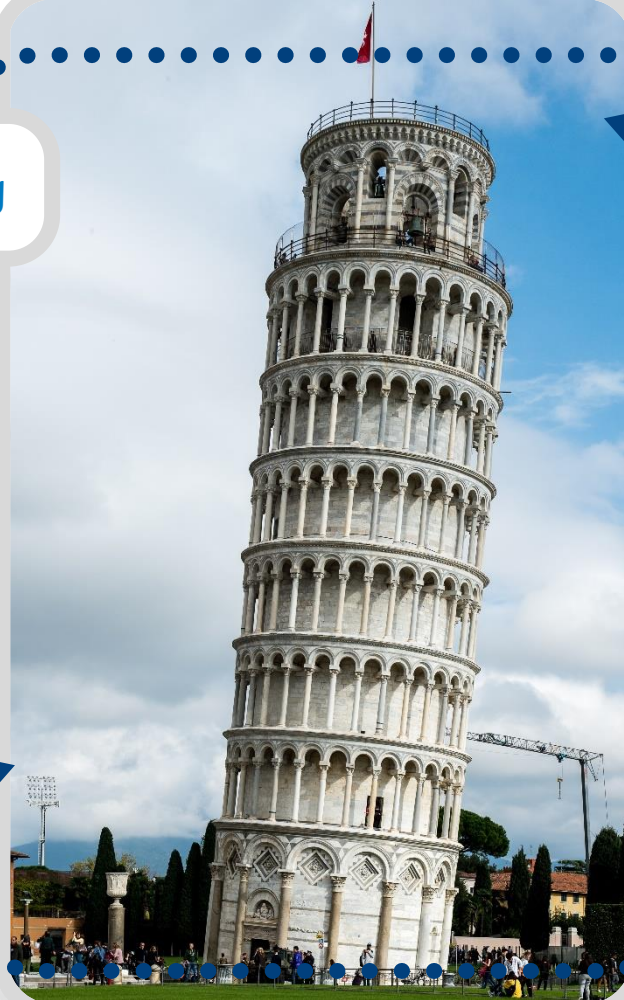
What Is a Landmark?



Tower Bridge, UK

What Is a Landmark?

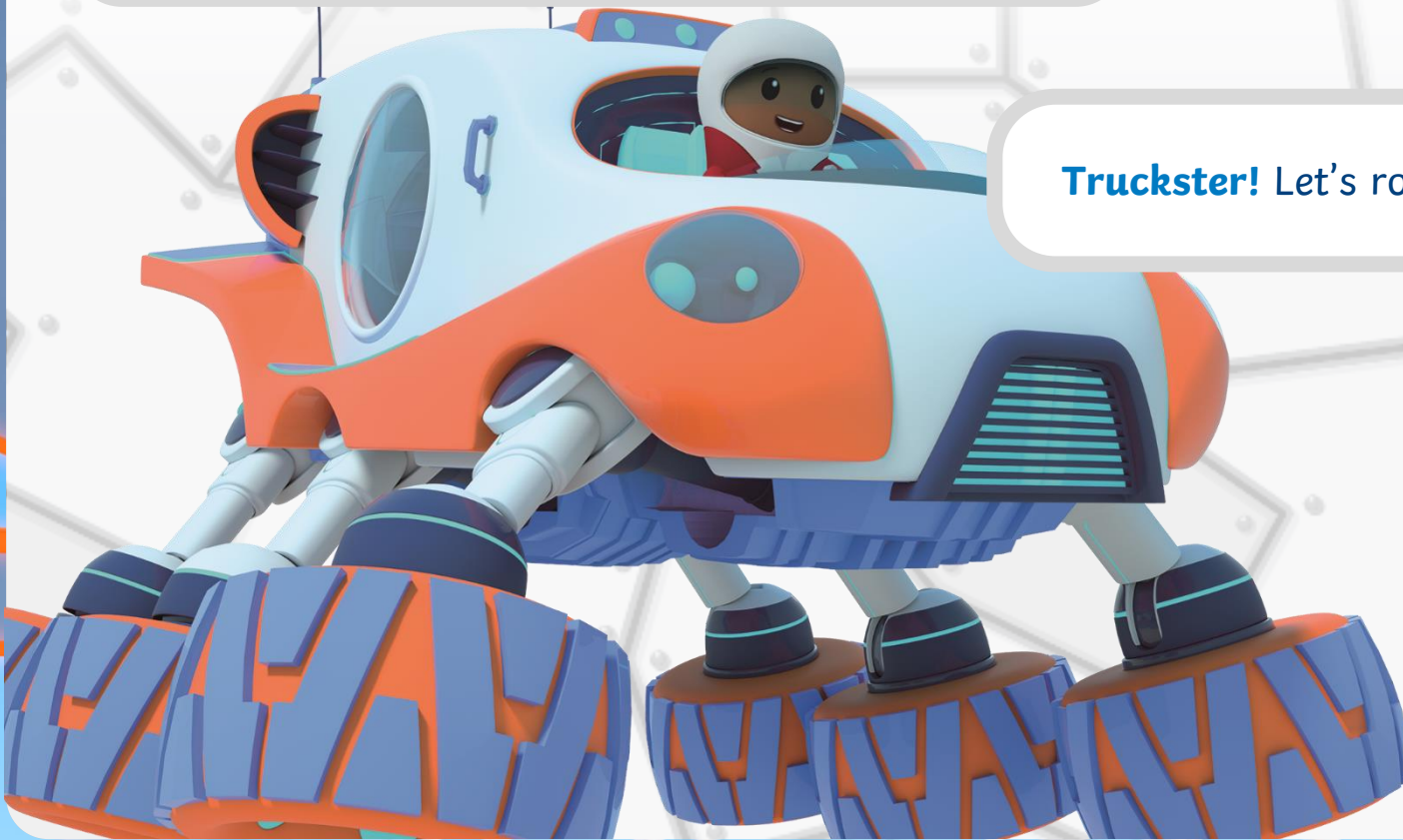
The Leaning Tower of Pisa, Italy



South America

Today, we are going to be learning about the continent of South America. Tell your partner anything you already know about **South America**.

Truckster! Let's roll!



Iguazu Falls, Argentina



Iguazu Falls are at the borders of Argentina, Brazil and Paraguay. They are 82 metres high and almost 3000 metres wide. All the falls together make the biggest waterfalls in the world. **Geographic!**



Amazon Rainforest



This is the Amazon rainforest which is in South America. Here is Ubercorn with some funky facts.



Mount Fitz Roy, Patagonia

Mount Fitz Roy is a mountain which is over 3300 metres high (which is about the same height as 736 double decker buses) and is one of the most difficult mountains to climb in the world!



Awesome! I would love to climb this mountain!



Rio Carnival, Brazil

Rio de Janeiro is a city in Brazil. It is famous for its carnivals. Here is Ubercorn to tell us more about it.



Atacama Desert, Chile

Here are some funky facts about the Atacama Desert.

3. It stretches from Peru all the way to Chile.



2. It has less than 1mm of rain a year and is the driest place on Earth.



1. Not many animals can live in such a dry place but some animals such as red scorpions, grey foxes, desert wasps and butterflies do.



Galapagos Islands, Ecuador

The Galapagos Islands have been formed from volcanos. The islands are famous for having a wide range of animals and plants, many of which cannot be found anywhere else in the world, such as: the giant tortoise, land iguana, Galapagos fur-seal, Galapagos penguin and Galapagos hawk. **Geographic!**



Easter Island

Easter Island is also called Rapa Nui.
Let's find out more from Ubercorn's top
three funky facts.



Machu Pichu, Peru

Machu Pichu is a city made of stone built in a tropical mountain forest in Peru. It was built for the Inca leaders around 600 years ago. There are 150 buildings altogether, from baths to temples. There is often low cloud around Machu Pichu because it is so high up!



I wonder how many stone steps there are here?



South America Quiz

How much have you learnt about South America?
It's time to find out!



South America Quiz

1. What might you see at **Easter Island**?

a. a waterfall

b. stone statues

c. a desert

2. What might you see on the **Galapagos Islands**?

a. a giant tortoise

b. a kangaroo

c. a zebra

South America Quiz

3. What is **Rio** famous for?

a. a volcano

b. carnivals

c. a castle

4. Which animal lives in the **Atacama Desert**?

a. a cat

b. a horse

c. a grey fox

South America Quiz



5. What is **Machu Pichu**?

a. a bird

b. a river

c. a stone city

