

Key Vocabulary

Digestive system, digestion, mouth, teeth, saliva, oesophagus, stomach, small intestine, nutrients, large intestine, rectum, anus, teeth, incisor, canine, molar, premolars, herbivore, carnivore, omnivore, producer, predator, prey, food chain

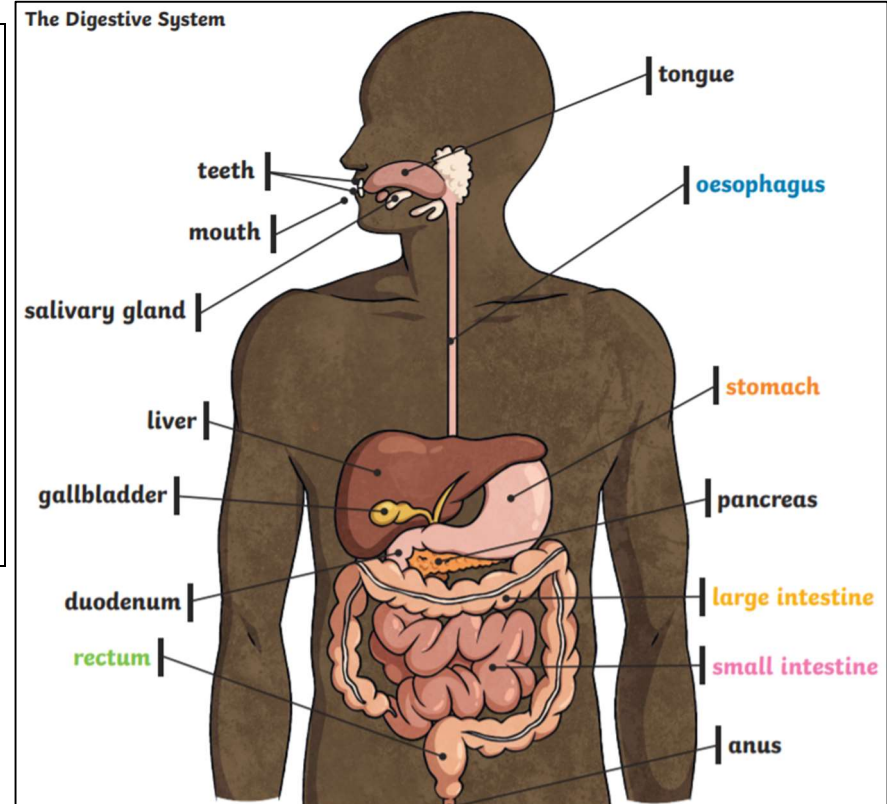
Food enters the body through the **mouth**.
Digestion starts when the **teeth** start to break the food down.
Saliva is added and the tongue rolls the food into a ball.

↓

The food is swallowed and passes down the **oesophagus** to the **stomach**. Here the food is broken down further by being churned around and other chemicals are added.

↓

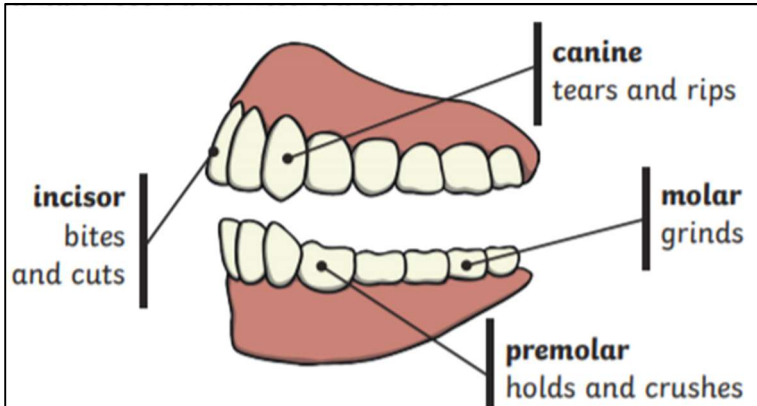
The food passes into the **small intestine**. Here **nutrients** are removed from the food and leave the digestive system to be used elsewhere in the body. The rest of the food then passes into the **large intestine**. Here the water is removed for use elsewhere in the body. What is left is then stored in the **rectum** until it leaves the body through the **anus** when you go to the toilet.



digest	Break down food so it can be used by the body.
oesophagus	A muscular tube which moves food from the mouth to the stomach.
stomach	An organ in the digestive system where food is broken down with stomach acid and by being churned around.
small intestine	Part of the intestine where nutrients are absorbed into the body.

large intestine	Part of the intestine where water is absorbed from remaining waste food. Stools are formed in the large intestine.
rectum	Part of the digestive system where stools are stored before leaving the body through the anus.

Humans have four types of teeth: **incisors** for cutting; **canines** for tearing; and **molars** and **premolars** for grinding (chewing).



herbivore	An animal that eats plants.
carnivore	An animal that feeds on other animals.
omnivore	An animal that eats plants and animals.
producer	A plant that produces its own food.
predator	An animal that hunts and eats other animals.
prey	An animal that gets hunted and eaten by another animal.

Living things can be classified as **producers**, **predators** and **prey** according to their place in the **food chain**.

An Example of a Food Chain

The arrows in a food chain show the flow of energy.

